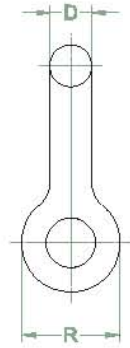
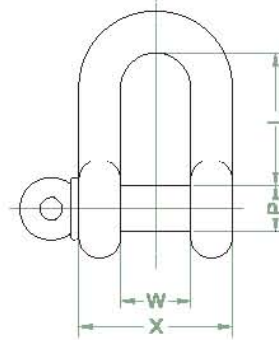


SHACKLE (S.C)



SPECIFICATION

Product Code	Size (inch)	SWL (WLL) (ton)	Dimension (mm)						Weight (kg)
			B	L	P	R	W	X	
SHSC-001	1/2	2	13	42	16	30	21	47	0.3
SHSC-002	5/8	3.25	16	51	19	40	27	59	0.5
SHSC-003	3/4	4.75	19	60	22	48	32	70	0.9
SHSC-004	7/8	6.5	22	71	25	54	37	81	1.4
SHSC-005	1	8.5	25	82	28	60	43	94	2
SHSC-006	1-1/8	9.5	28	92	32	67	46	103	2.8
SHSC-007	1-1/4	12	32	99	35	76	51	115	3.9
SHSC-008	1-1/2	17	38	121	42	92	60	136	7
SHSC-009	1-3/4	25	45	146	50	109	73	163	12.5
SHBC-010	2	35	51	162	58	127	83	185	17.8

Standard

- **Material**_ Forged carbon steel(Body), Forged alloy steel(Pin)
- **Test Load**_ Proof Load = SWL(WLL)×2, Breaking Load = SWL(WLL)×6
- **Surface**_ Body(Hot Dip Galvanized), Pin(Painted, Orange Color)
- **Reference**_ Federal specification, RR-C-271D
- **ETC**_ Available certificate of NDT (M/T, U/T), 3rd Inspection test report

Commercial

- **Material**_ Forged carbon steel
- **Test Load**_ Proof Load = SWL(WLL)×1.5, Breaking Load = SWL(WLL)×3
- **Surface**_ Electro galvanized
- **ETC**_ Available certificate of NDT (M/T, U/T), 3rd Inspection test report