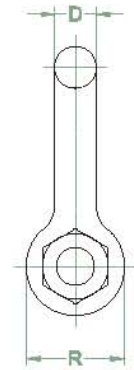
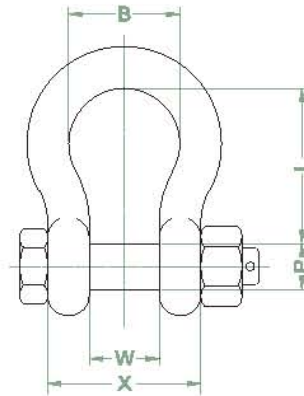


SHACKLE (B.B)



SPECIFICATION

Product Code	Size (inch)	SWL (WLL) (ton)	Dimension (mm)							Weight (kg)
			B	D	L	P	R	W	X	
SHBB-001	1/2	2	34	13	48	16	30	21	47	0.4
SHBB-002	5/8	3.25	43	16	60	19	40	27	59	0.7
SHBB-003	3/4	4.75	51	19	73	22	48	32	70	1.1
SHBB-004	7/8	6.5	58	22	85	25	54	37	81	1.8
SHBB-005	1	8.5	68	25	95	28	60	43	94	2.6
SHBB-006	1-1/8	9.5	74	28	109	32	67	46	103	3.8
SHBB-007	1-1/4	12	83	32	119	35	76	51	115	5
SHBB-008	1-3/8	13.5	92	35	134	38	84	57	127	6.8
SHBB-009	1-1/2	17	98	38	146	42	92	60	136	8.4
SHBB-010	1-3/4	25	127	45	177	50	109	73	163	14.9
SHBB-011	2	35	146	51	197	58	127	83	185	22.6
SHBB-012	2-1/2	55	184	69	267	70	150	115	253	46.4
SHBB-013	3	85	200	79	330	83	168	128	292	79

Standard

- **Material**_ Forged carbon steel(Body), Forged alloy steel(Pin)
- **Test Load**_ Proof Load = SWL(WLL)×2, Breaking Load = SWL(WLL)×6
- **Surface**_ Body(Hot Dip Galvanized), Pin(Painted, Orange Color)
- **Reference**_ Federal specification, RR-C-271D
- **ETC**_ Available certificate of NDT (M/T, U/T), 3rd Inspection test report

Commercial

- **Material**_ Forged carbon steel
- **Test Load**_ Proof Load = SWL(WLL)×1.5, Breaking Load = SWL(WLL)×3
- **Surface**_ Electro galvanized
- **ETC**_ Available certificate of NDT (M/T, U/T), 3rd Inspection test report