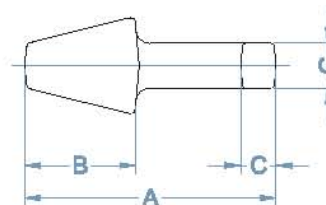
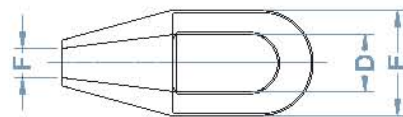


# CLOSED SPELTER SOCKET



## SPECIFICATION

Product Code	Size (inch)	SWL (WLL) (ton)	Dimension (mm)							Weight (kg)
			A	B	C	D	E	F	G	
SKCL-001	5/16 ~ 3/8	2	125	57	15.5	25	43	13	17.5	0.4
SKCL-002	7/16 ~ 1/2	3	140	64	17	29	50	14	22	0.7
SKCL-003	9/16 ~ 5/8	5	161	77	21	36	67	18	25	1.5
SKCL-004	3/4	7	194	92	27	42	76	22	32	2.1
SKCL-005	7/8	10	223	102	32	48	92	25	38	3.5
SKCL-006	1	12	250	114	35	58	104	29	45	5
SKCL-007	1-1/8	15	279	127	38	65	114	32	51	6.8
SKCL-008	1-1/4 ~ 1-3/8	20	308	150	42	70	127	38	57	9.9
SKCL-009	1-1/2	25	354	163	49	81	137	42	60	12.9
SKCL-010	1-5/8	30	384	165	54	82	146	44	70	16
SKCL-011	1-3/4 ~ 1-7/8	40	438	190	56	96	172	51	76	23.7
SKCL-012	2 ~ 2-1/8	50	505	216	62	110	194	57	83	33.9
SKCL-013	2-1/4 ~ 2-3/8	65	546	228	70	128	216	67	92	44.8
SKCL-014	2-1/2 ~ 2-5/8	80	597	248	80	140	240	73	102	64
SKCL-015	2-3/4 ~ 2-7/8	90	645	280	80	158	272	80	124	100
SKCL-016	3 ~ 3-1/8	100	689	305	86	170	292	86	134	125
SKCL-017	3-1/4 ~ 3-3/8	120	743	330	103	184	312	92	146	142
SKCL-018	3-1/2 ~ 3-5/8	140	788	356	102	200	330	100	160	180

- **Material**\_ 1/2 ~ 1-1/2" : Forged carbon steel  
3/8", 1-5/8 ~ 3-1/2" : Cast steel
- **Test Load**\_ Proof Load = SWL(WLL)×2, Breaking Load = SWL(WLL)×5
- **Surface**\_ Self Color / Hot Dip Galvanized
- **Reference**\_ Federal specification, RR-S-550D  
ISO 3189-1/2/3
- **ETC**\_ 3/8" ~ 3/4" size spelter socket have only one groove, 7/8" ~ 1-1/2" size have two groove and, 1-5/8" ~ 3-1/3" size have three groove.  
Available certificate of NDT (M/T, U/T), 3rd Inspection test report.  
Special size, design and, another material will can supply as your requirement.